

### No. 5250 HAKU Saddle

Pipe Ø mm	female threaded outlet			
	1"	1¼"	1½"	2"
40	•			
50	•			
63	•	•	•	•
75	•	•	•	•
90	•	•	•	•
110	•	•	•	•
125	•	•	•	•
140	•	•	•	•
160	•	•	•	•
180	•	•	•	•
200	•	•	•	•
225	•	•	•	•
250	•	•	•	•
280				•
280*	•	•	•	•
315				•
315*	•	•	•	•
400*			•	•
450*			•	•
500*			•	•

\* supplied as saddle piece with strap

Caution: When being used on **PE pipes**, this type is suitable on **class SDR 11** and higher qualities, **only**



**For PE and PVC pipes of all pressure ratings up to PN 16** to DIN 8074, 8061/8062

**for cold water**, other applications on request

The HAKU sealing system is the best method for sealing outlets in plastic pipes.

The HAKU seal is in full contact with the entire diameter of the PE or PVC pipe and is glued into the saddle for ease of assembly.

In addition several concentric seals with increasing diameter surround the outlet thus relieving the pressure upon the drill hole and protecting it from deformation.

#### Material:

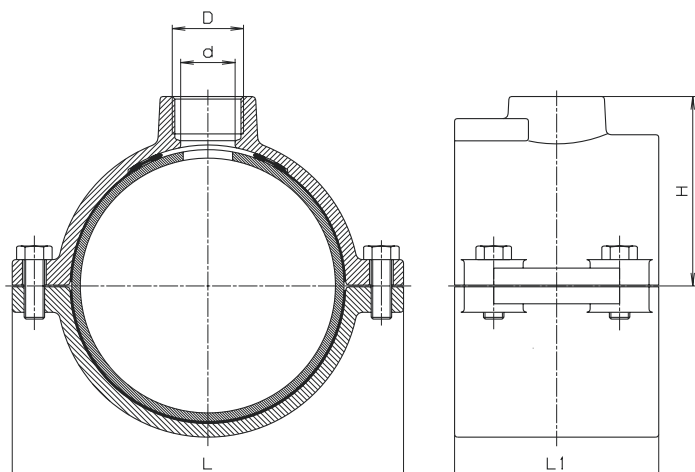
d 40	EN-GJL-250 (GG 250) - EN 1561, epoxy powder coated
d 50 - 500	EN-GJS-400-18 (GGG 400) - EN 1563 epoxy powder coated
Rubber seals:	elastomer, suitable for potable water
Bolts and washers:	stainless steel - A 2

# HAKU Saddle

## No. 5250 HAKU Saddle

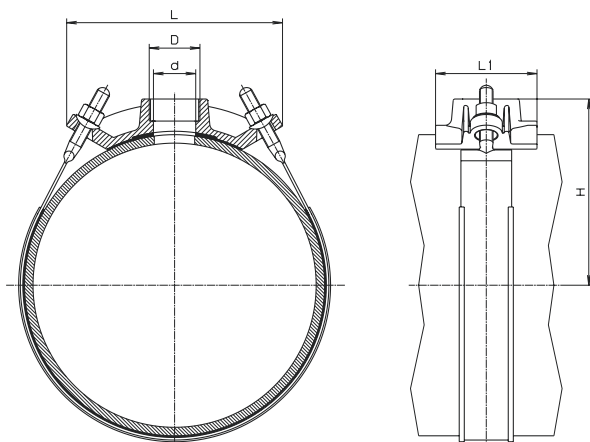
Pipes	ÖNORM	DIN
PE	B 5170	8072
PE	B 5172	8074
PVC	B 5182	8061/62 resp.19532

Pipe Ø mm 40 - 315



+ max. 35 mm drill tips

\* Pipe Ø mm 280 - 500 (supplied as saddle piece with strap)  
Caution: When being used on **PE pipes**, this type is suitable on **class SDR 11** and higher qualities, **only**



Pipe Ø mm	D	d Ø	H	L	L 1	Weight kg
40	1"	27	42	98	70	0,95
50	1"	27	56	110	80	1,20
63	1"	27	57	124	100	1,80
	1¼"	33	62			2,00
	1½"	40	62			1,90
	2"	40+	68			2,10
75	1"	27	63	135	110	2,15
	1¼"	33	68			2,25
	1½"	40	68			2,20
	2"	50	73			2,30
90	1"	27	71	150	110	2,60
	1¼"	33	75			2,70
	1½"	40	75			2,60
	2"	50	80			2,70
110	1"	27	81	170	120	3,60
	1¼"	33	85			3,60
	1½"	40	85			3,80
	2"	50	90			3,60
125	1"	27	87	192	120	3,70
	1¼"	33	93			3,70
	1½"	40	93			4,15
	2"	50	98			4,10
140	1"	27	96	208	120	4,40
	1¼"	33	100			4,30
	1½"	40	100			4,60
	2"	50	106			4,50
160	1"	27	106	230	120	5,90
	1¼"	33	111			6,10
	1½"	40	111			6,30
	2"	50	116			6,20
180	1"	27	125	262	120	8,00
	1¼"	33	125			8,00
	1½"	40	127			8,10
	2"	50	127			8,10
200	1"	30	132	282	120	8,10
	1¼"	33	132			7,80
	1½"	40	137			8,30
	2"	50	137			8,10
225	1"	27	143	310	120	9,10
	1¼"	33	145			9,40
	1½"	40	145			9,70
	2"	50	150			9,60
250	1"	27	156	347	180	11,00
	1¼"	33	156			11,30
	1½"	40	163			11,50
	2"	50	163			12,00
280	1"	27	176	204	120	3,80
	1¼"	38	176			3,60
	1½"	44	176			3,60
	2"	50	176			3,30
	2"	51	178			14,20
315	1"	27	196	200	120	3,80
	1¼"	38	196			3,80
	1½"	44	196			3,75
	2"	50	196			3,55
	2"	51	196			16,70
400	1½"	40	243	270	120	4,90
	2"	50	243			4,90
450	1½"	40	268	235	120	4,60
	2"	50	268			4,60
500	1½"	40	292	255	120	4,90
	2"	50	292			4,90